



**Vigor N61
Wireless Adapter
Quick Start Guide**

Version: 1.0

Date: 2007/10/01

Please visit www.draytek.com to get the newly updated manual at any time.

Copyright Information

Copyright Declarations

Copyright 2007 All rights reserved. This publication contains information that is protected by copyright. No part may be reproduced, transmitted, transcribed, stored in a retrieval system, or translated into any language without written permission from the copyright holders. The scope of delivery and other details are subject to change without prior notice.

Trademarks

The following trademarks are used in this document:

- Microsoft is a registered trademark of Microsoft Corp.
- Windows, Windows 2000, XP, Vista and Explorer are trademarks of Microsoft Corp.
- Other products may be trademarks or registered trademarks of their respective manufacturers.

Safety Instructions and Approval

Safety Instructions

- Read the installation guide thoroughly before you set up the card.
- The wireless card is a complicated electronic unit that may be repaired only by authorized and qualified personnel. Do not try to open or repair the wireless card yourself.
- Do not place the wireless card in a damp or humid place, e.g. a bathroom.
- The wireless card should be used in a sheltered area, within a temperature range of +5 to +40 Celsius.
- Do not expose the wireless card to direct sunlight or other heat sources. The housing and electronic components may be damaged by direct sunlight or heat sources.
- Keep the package out of reach of children.
- When you want to dispose of the wireless card, please follow local regulations on conservation of the environment.

Warranty

We warrant to the original end user (purchaser) that the wireless card will be free from any defects in workmanship or materials for a period of one (1) year from the date of purchase from the dealer. Please keep your purchase receipt in a safe place as it serves as proof of date of purchase. During the warranty period, and upon proof of purchase, should the product have indications of failure due to faulty workmanship and/or materials, we will, at our discretion, repair or replace the defective products or components, without charge for either parts or labor, to whatever extent we deem necessary to restore the product to proper operating condition. Any replacement will consist of a new or re-manufactured functionally equivalent product of equal value, and will be offered solely at our discretion. This warranty will not apply if the product is modified, misused, tampered with, damaged by an act of God, or subjected to abnormal working conditions. The warranty does not cover the bundled or licensed software of other vendors. Defects which do not significantly affect the usability of the product will not be covered by the warranty. We reserve the right to revise the manual and online documentation and to make changes from time to time in the contents hereof without obligation to notify any person of such revision or changes.

Driver Updates

Please consult the DrayTek web site for more information on newest driver, and documents. <http://www.draytek.com>

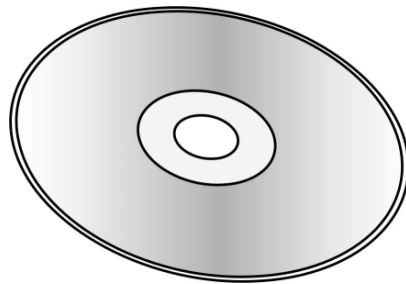
Warning

- Compatibility with IEEE 802.11n future version is not guaranteed.
- Compatibility with IEEE 802.11n draft devices from other manufacturer is not guaranteed.

1. Package Content



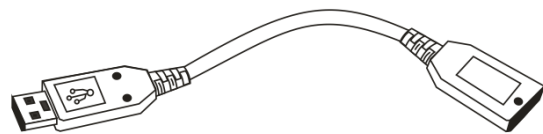
1 Quick Start Guide



2 CD



3 Wireless Adapter



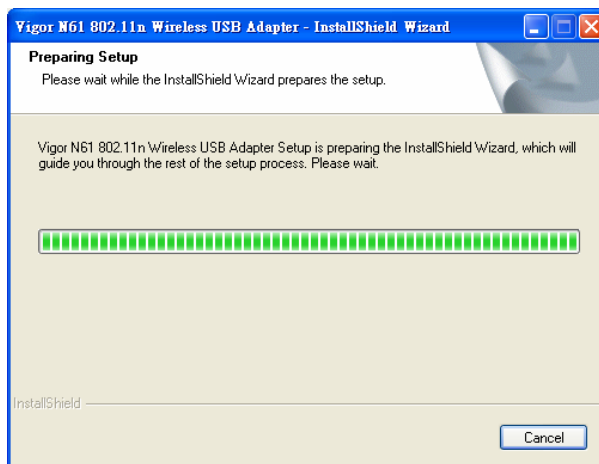
4 USB Cable

2. Installing USB Driver

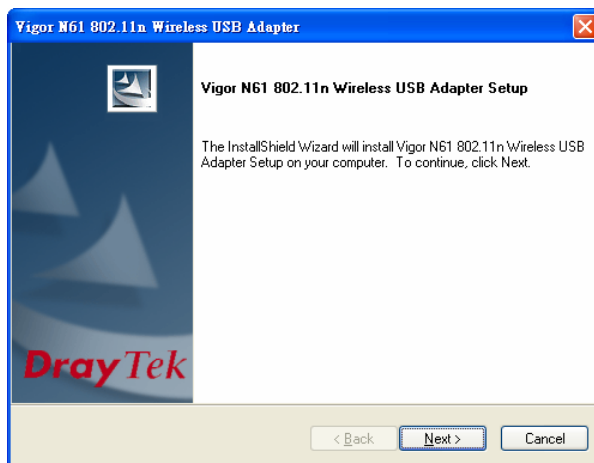
Before you installing USB driver for Vigor N61, ***do not insert*** the wireless adapter in your computer.

Follow the step below to install USB driver.

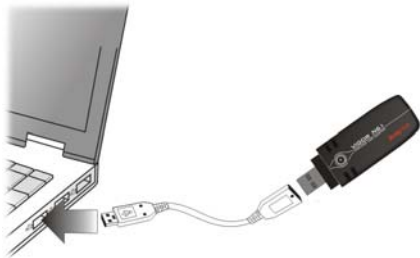
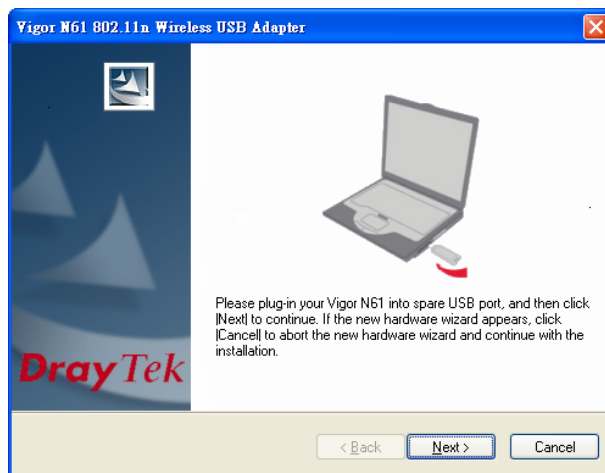
1. Insert the CD into your computer. The following screen will appear.



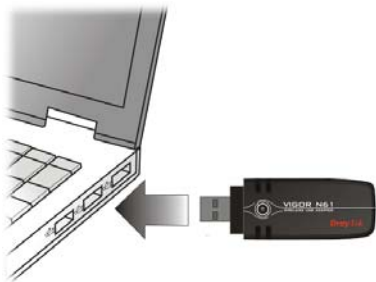
2. The setup wizard will appear as follows. Please click **Next**.



3. Now, you can insert Vigor N61 to the USB port of your computer. Then click **Next**.

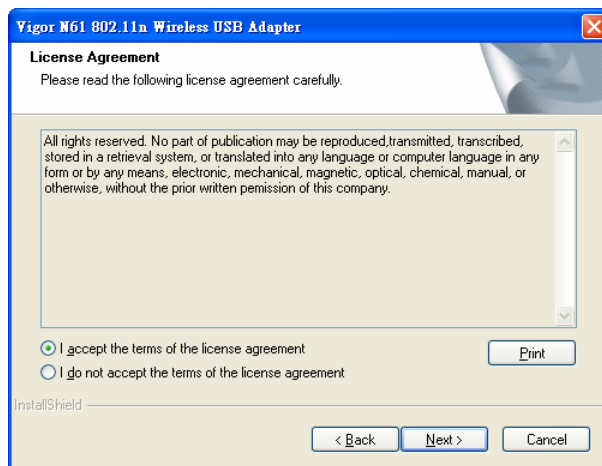


Connect with USB cable

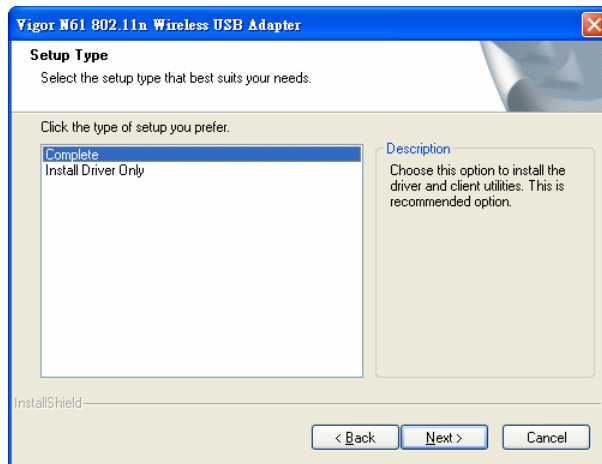


Connect directly

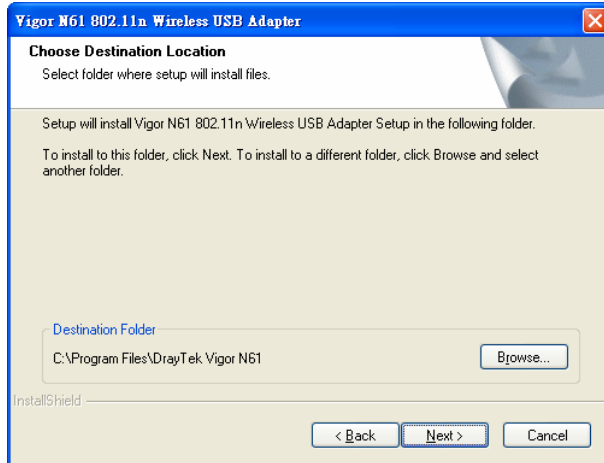
4. In this page, you have to choose “**I accept...**” to continue the installation. If you do not accept the agreement, you can click “**I do not...**” to exit the wizard. And the driver installation will not be installed to your computer.



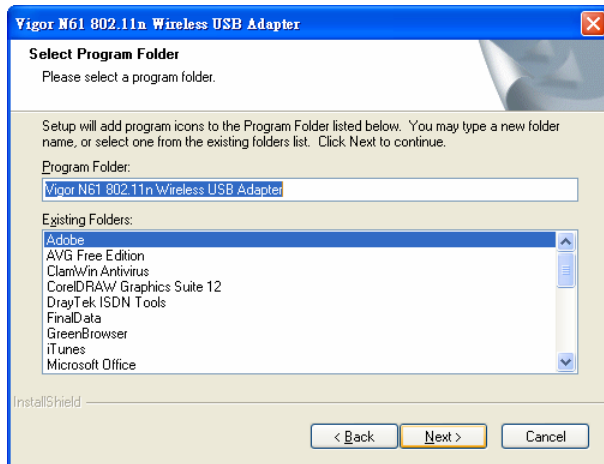
5. There are two types of setup that you have to choose, **Complete** or **Install Driver Only**. If you do not know which one is proper, simply choose **Complete** and click **Next**.



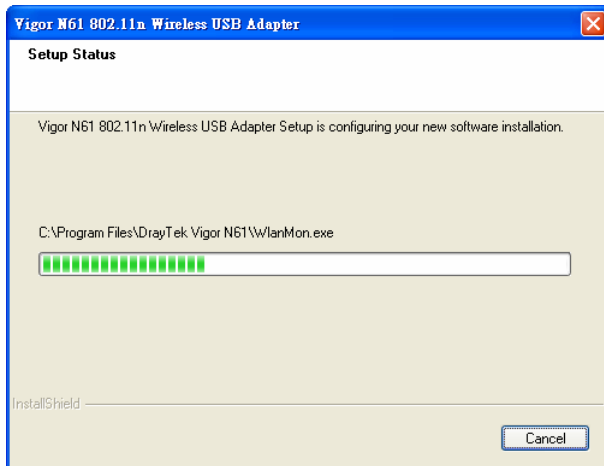
6. The default destination folder will be specified in this page. Also, you can click **Browse...** to choose another folder for storing the driver. Click **Next**.



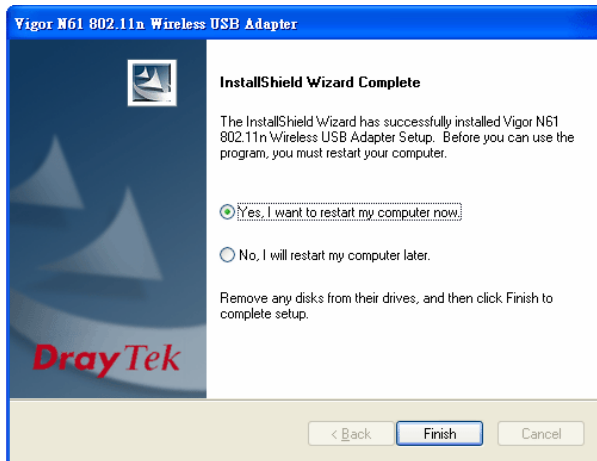
7. A default program folder will be offered by the setup program. If you do not want to change it, simply click **Next**.



8. The setup program is executing the installation by copying corresponding files to your computer.



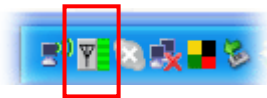
9. Now the system will ask you to restart your computer to complete the whole installation. After choosing the proper setting, please click **Finish**.



10. After restarting your system, the system will find out the hardware (wireless LAN card) automatically. When it locates, a message will be shown on the system tray.



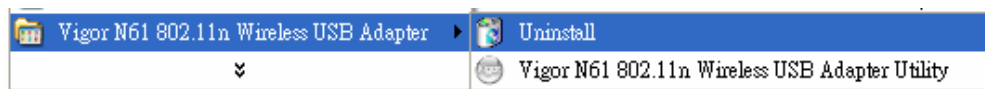
11. Now, you can find the wireless LAN card icon in the system tray. Double click it to open the configuration window of Vigor N61 wireless adapter.



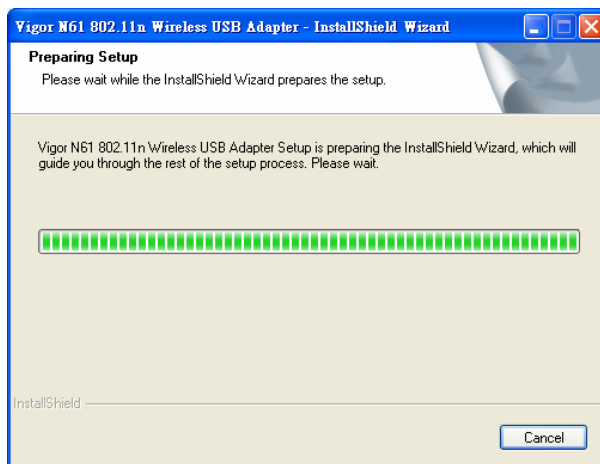
3. Uninstalling USB Driver

If you want to remove the driver for this wireless card, please do the following:

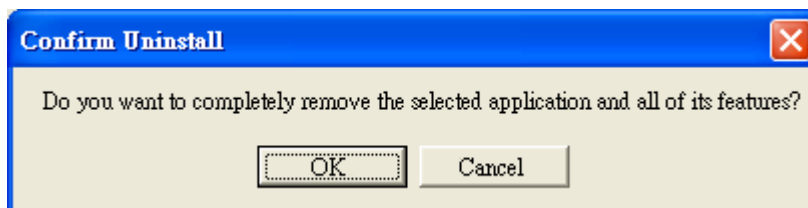
1. Run **Start >> Programs>> Vigor N61 802.11n Wireless USB Adapter Utility>>Uninstall**.



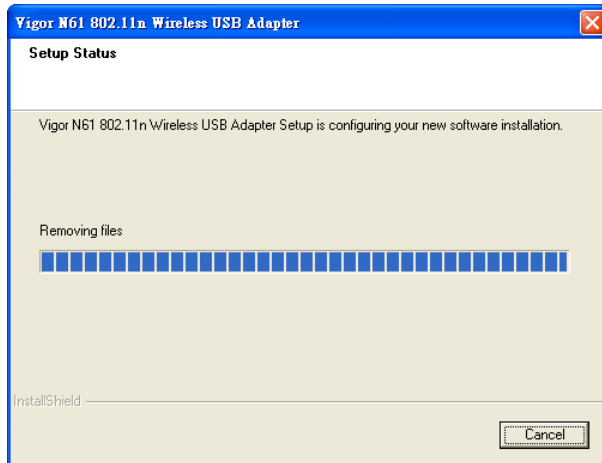
2. The **Preparing Setup** will appear.



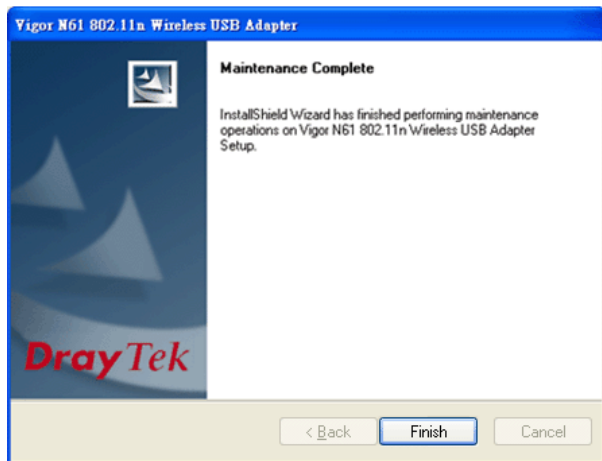
3. When the following screen appears, please click **OK**.



4. Now, the system starts to remove the corresponding files.



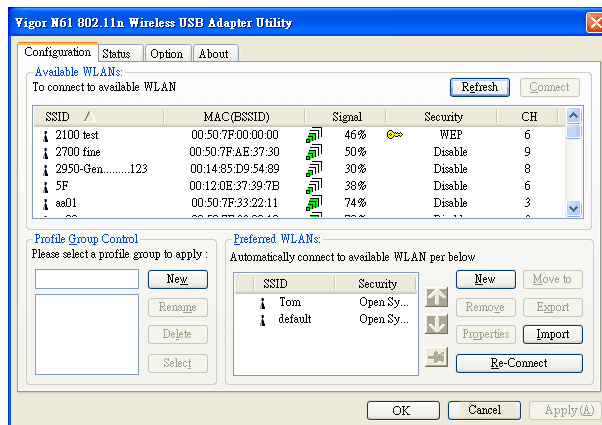
5. When the following dialog appears, please click **Finish**.



4. Configuration for Accessing Internet

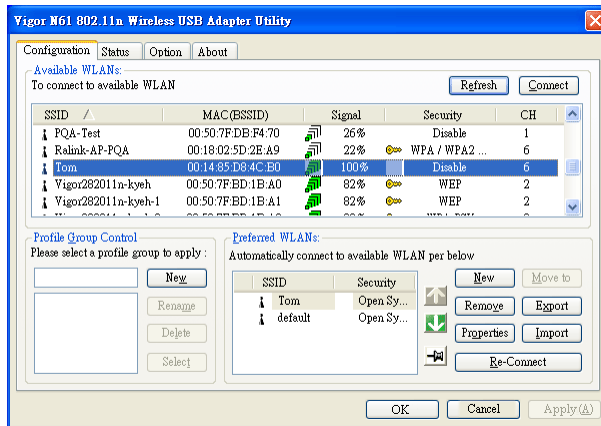
Follow the steps below for the client (station) to access Internet quickly and easily.

1. Double click on the wireless LAN card icon  on the system tray. The **Vigor N61 802.11n Wireless USB Adapter Utility** window will appear as the following. Click the tab of **Configuration**.

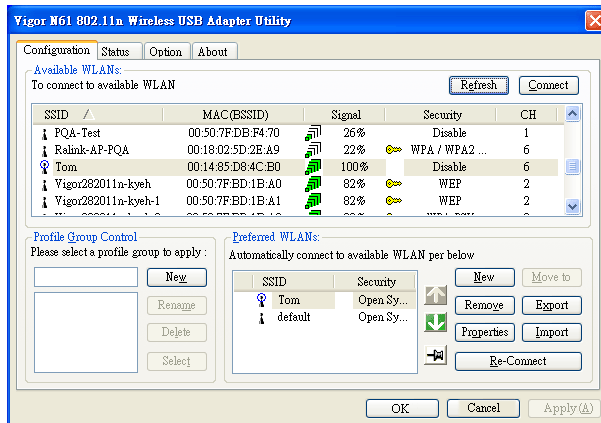


The available wireless AP will be displayed automatically. *The following figure is just an example. The real available list depends on the AP(s) that found around your computer system.*

- Choose the one (AP) that you want to connect for accessing Internet. In this example, **Tom** is selected. Then, click **Connect**.



- Now your computer can access Internet through the AP selected in such Utility. If you want to set more advanced settings for the wireless card, please refer to User's Manual of Vigor N61 in CD.



Signal Explanation:



means the AP is ready for you to connect

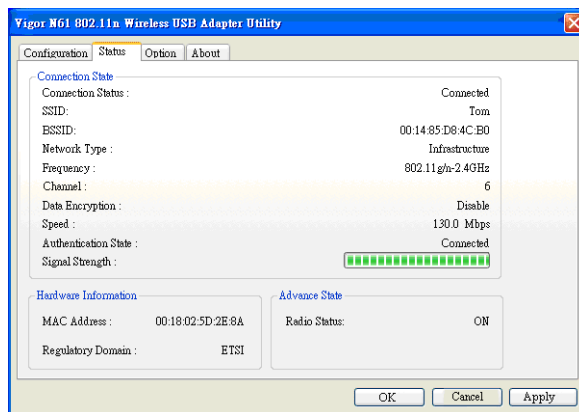



means connecting to that AP successfully



means connection is failed.

4. Click the **Status** tab to see if the wireless connection is well or not. You should find the word – **Connected** on the line of Connection Status.



5. Besides, you will find the icon  from the system tray indicating that the station can access Internet through the AP (Tom). You can open the following page to check wireless connection again by double clicking the icon.

